

# 'Green' modular ute fit-out

**We are proud to offer a 'Green' alternative to the classic hardwired ute fit-out, which not only reduces CO<sub>2</sub> emissions but also reduces fuel costs.**

Reduce CO<sub>2</sub> emissions with our 'Green' fit-out. The design is a fully self-contained system, powered by solar with a battery storage solution. No hardwiring to the vehicle also gives you the flexibility to use your vehicle as a traffic control ute or for general purpose simply by forklifting the cage on and off.

**No need for engine idling equals a dramatic reduction of CO<sub>2</sub>**

**Fully customisable**

**Optional VMS and Arrow Boards**

**Optional Solar and Battery package**

**No wires between cage and vehicle**

**Bluetooth control**

**Easy to forklift cage on and off**

Our Modular fit-out comes with two major advantages:

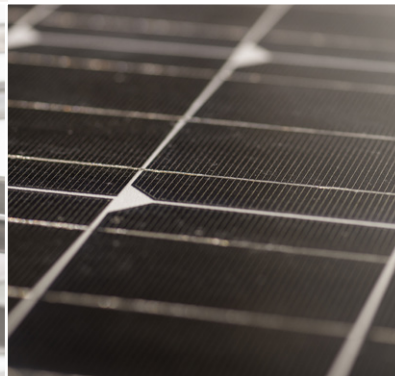
Firstly, the solar panels and battery storage options allow engine free operation of Arrow and VMS Boards. In addition to less environmental impact, this solution reduces petrol costs as solar energy is used during operation or is stored to the battery for later consumption.

Secondly, the modular concept enables operations and fleet managers to flexibly deploy vehicles as needed. Your entire fleet can be converted from a general-purpose ute to a full traffic control ute within minutes. Simply forklift the modular fit-out onto a ute and it becomes a traffic control vehicle - no wiring to the vehicle required.



## Features

- Fully customizable secure cage meeting your specific needs
- Optional VMS and Arrow Boards
- Optional Solar and Battery package for 100% engine independent operation of VMS and / or Arrow Boards
- Dramatic reduction of CO<sub>2</sub> and fuel charges during traffic control operations
- No wires between secure cage and vehicle
- 100% flexibility to forklift cage installation on and off utes as needed



## Options

**Cage Design:** Any secure cage compartments, sizes and features are possible. Our cage designs are not only a secure but also safe. No more slamming on fingers as they are all fully hydraulic. Option to include a specially designed eSTOP cage.

**Solar & Battery:** The solar and battery are sized to suit your equipment fit-out, such as Arrow boards, VMS and other accessories. Your entire equipment will be powered entirely from renewable sources - no more idling engine and no hardwire connection to your vehicle or its power supply.

**VMS / Arrow Board:** Select from our in-house range of VMS and Arrow Boards.

**Add on Accessories:** Enhance your cage with work lights, beacons, cameras or DVR recording. Please visit our website for details.



For more information phone +61 (07) 3881 3302





# Quality Australian manufacturing.

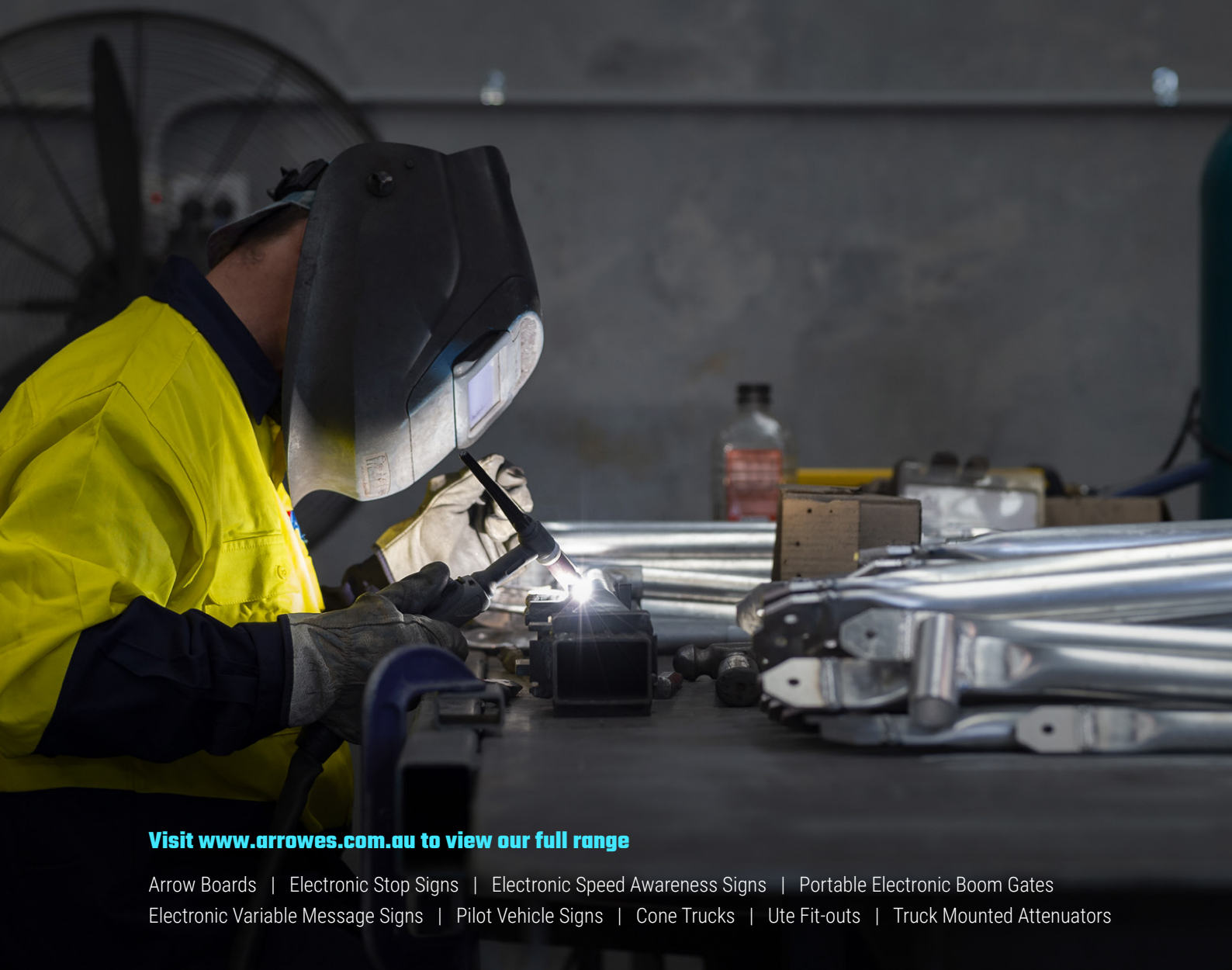
Our manufacturing facilities are closely embedded into the local and regional supply chain and ecosystem. Arrowes sources as many components, parts and supplies as possible from our Queensland and Australian suppliers. We support the local business community and ensure our close connections benefit our clients in terms of response times, quality and service.

---

**Find out more about how we can help your team:**

**P. +61 (07) 3881 3302**

**E. [sales@arrowes.com.au](mailto:sales@arrowes.com.au)**



**Visit [www.arrowes.com.au](http://www.arrowes.com.au) to view our full range**

Arrow Boards | Electronic Stop Signs | Electronic Speed Awareness Signs | Portable Electronic Boom Gates  
Electronic Variable Message Signs | Pilot Vehicle Signs | Cone Trucks | Ute Fit-outs | Truck Mounted Attenuators



**ARROWES™**  
ROADING SAFETY